

Value Added Partners

Helping clients since 1981

January 2025

New Year, New Online Presence

2025 is off to a flying start. We have already heard from many of you who are taking advantage of the higher limit on gifts (\$19,000) to send money to family members. Others have called to get a start on contributing to their retirement accounts. We spent a lot of time before the fifteenth getting estimated tax payments out the door. It has been a busy time.

Before everyone gets too immersed in their routines, we wanted to suggest that you take a fresh look at our [website](#). First, the site houses all of our recent presentations. If you want to watch a replay of one of our client Zooms or check on something from an old newsletter, you can scroll down towards the bottom of our Home Page and find them.

Second, the site is our 'calling card' for prospective clients. As a general rule, when someone is referred to us, that person will check us out by visiting the site. As such, there are biographical entries for the team and descriptions of our process for advising clients and handling their administrative needs.

New Value Added Partners Video



We also try to connect via a video on the Home Page. We just updated the video for the first time in a few years. The last time we posted a video, several of you were kind enough to look at it and to give us feedback, which we really appreciated. If you could take a few minutes to click on this link and let us know what you think, we would be very grateful.

[View VAP Video](#)

2025 Contribution Limits and Other Numbers

We noted above that the new year brought a higher amount that you can gift to family members (\$19,000 in 2025 versus \$18,000 last year). Other financial numbers changed on January first. Here are a few of the important ones:

401(k) Contribution Limits:

- for Ages 50 or Lower: \$23,500 (up \$500 from 2024)
- for Ages 50–59 and 64+: \$7,500 (same as last year)
- for Ages 60–63: \$11,250 (this is an entirely new advantage for those in their early 60s)

SEP IRA Contribution Limit:

- \$70,000 (up \$1,000 from 2024)

IRA and Roth IRA Contribution Limits:

- \$7,000 if you are under 50 and \$8,000 if you are older than that (no change)

Please feel free to call us if you have any questions or if you wish to start making your 2025 contributions.

All of us hope that 2025 turns out to be a wonderful year for your family and you. We thank you in advance for checking out our video and for all that you do to support us year-round.

Harry Elish, CFP,[®] CPWA[®]

Managing Director—
Wealth Management
Private Wealth Advisor

212-713-8719
harold.elish@ubs.com
ubs.com/team/valueaddedpartners

California Insurance License #0141743



Kevin O’Leary, CFA, CFP[®]

Managing Director—
Wealth Management
Private Wealth Advisor

212-713-2525
kevin.oleary@ubs.com
ubs.com/team/valueaddedpartners



Timothy Turpin

Senior Vice President—
Wealth Management

212-713-6242
timothy.turpin@ubs.com
ubs.com/team/valueaddedpartners



Nicholas Landy, CFP[®]

Senior Vice President—
Wealth Management

212-713-6154
nick.landy@ubs.com
ubs.com/team/valueaddedpartners



Sarah Wilson

Financial Advisor

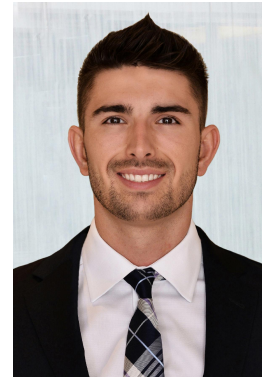
212-713-2523
sarah.wilson@ubs.com
ubs.com/team/valueaddedpartners



Ryan Karl, CFP®

Wealth Strategy Associate

212-713-9287
ryan.karl@ubs.com
ubs.com/team/valueaddedpartners



We look forward to hearing from you.

The information contained in this newsletter is not a solicitation to purchase or sell investments. Any information presented is general in nature and not intended to provide individually tailored investment advice. The strategies and/or investments referenced may not be suitable for all investors as the appropriateness of a particular investment or strategy will depend on an investor's individual circumstances and objectives. Investing involves risks and there is always the potential of losing money when you invest. The views expressed herein are those of the author and may not necessarily reflect the views of UBS Financial Services Inc.

Neither UBS Financial Services Inc. nor its employees (including its Financial Advisors) provide tax or legal advice. You should consult with your legal counsel and/or your accountant or tax professional regarding the legal or tax implications of a particular suggestion, strategy or investment, including any estate planning strategies, before you invest or implement.

As a firm providing wealth management services to clients, UBS Financial Services Inc. offers investment advisory services in its capacity as an SEC-registered investment adviser and brokerage services in its capacity as an SEC-registered broker-dealer. Investment advisory services and brokerage services are separate and distinct, differ in material ways and are governed by different laws and separate arrangements. It is important that you understand the ways in which we conduct business, and that you carefully read the agreements and disclosures that we provide to you about the products or services we offer. For more information, please review client relationship summary provided at ubs.com/relationshipsummary, or ask your UBS Financial Advisor for a copy.

©UBS 2025. The key symbol and UBS are among the registered and unregistered trademarks of UBS. All rights reserved. UBS Financial Services Inc. is a subsidiary of UBS Group AG. Member FINRA/SIPC.

